

Bellfield College
Senior School Weekly

IN THIS ISSUE



- IMPORTANT DATES
- HEAD OF SENIOR SCHOOL MESSAGE
- IHSAN ADVERTISING
- ASX SCHOOL SHAREMARKET FLYER
- CAREERS INFORMATION
- NAPLAN UPDATE
- CANTEEN INFORMATION
- UNIFORM
- COLLEGE PROTOCOLS
- SENIOR SCHOOL CONTACTS

IMPORTANT DATES

28th February - Year 7 Elevate

5th March - Walkathon

7th March - Year 7 Science Excursion

15th March - 24th March - NAPLAN Online

29th March - Visual Arts Excursion

6th April - Last day of Term 1



Mouina Ramadan

HEAD OF SENIOR SCHOOL MESSAGE

Peace and Blessings



Dearest Bellfield Family,

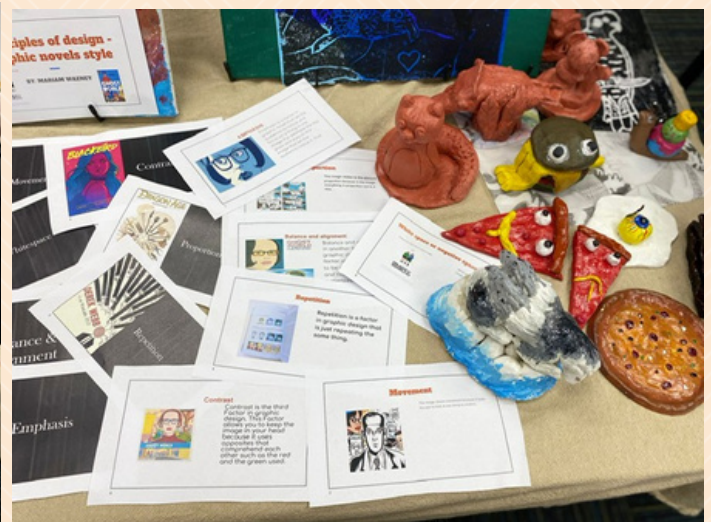
This edition of the weekly reflects the numerous opportunities available for our students to participate in co-curricular, academic and creative arts arenas.

All students and parents need to be aware of the importance of road safety given the number of students catching public transport and learning to drive. Students participate in driver and road safety programs, taught in the PDHPE curriculum and it is vital to continue this dialogue at home.

Parents were warmly welcomed onsite to attend the Parent Information Evening (pictured below) and heard about the vision for IHSAN and Teaching and Learning aims for 2023. Parents listened to presentations about the ethos and educational models employed at the College with an opportunity to meet and greet our teachers. I thank you for embracing your role in the parent-school tri partnership and hope to see you at future all college events.

Kind regards,

Mouina Ramadan
Head of Senior School



Road Safety and Awareness

Please be vigilant when on the School grounds and around School zones.



<https://roadsafety.transport.nsw.gov.au/campaigns/be-bus-aware/index.html>

BE BUS AWARE

**Wait until the bus
has gone then use a
safe place to cross**



BeBusAware.com.au

BELLFIELD'S MAB'ATH



HOT SEAT



MORE THAN A COMPETITION!

Test your Knowledge of Prophet Muhammad's Life History and Win Bellfield's first IHSAN prize for the Mab'ath Hot Seat.



**Wednesday,
1st March,
2023**



**Bellfield College
Library**



3 teams per grade (max. number of students per team is 5)



Give your team a name



Knockout rounds of fast paced questions on stage



First in, first Registered!

**For registrations, send names of team members to
zeinab.salim@bellfield.nsw.edu.au**

**BELLFIELD'S PDHPE AND
MENTORING TEAM PRESENTS**



ihsan
CRAFTING CHARACTER



BELLFIELD'S DODGEBALL COMP



SENIOR TERM 1
PLAYGROUNDWEEK 5

YEARS - 7-12

8-12 PLAYERS PER TEAM

SURPRISE PRIZES




REGISTER ONLINE VIA CANVAS

Walk With Us To Commemorate The Birth Anniversary Of Imam Mahdi (A)



ihsan
CRAFTING CHARACTER

Step Into His Virtues

 Sunday 5th March 2023
10 A.M. - 4 P.M.

 The Homestead Park
18 Charlton Ave, Chipping Norton NSW 2170




ihsan
CRAFTING CHARACTER

بِسْمِ اللَّهِ الرَّحْمَنِ الرَّحِيمِ

Qur'an Club for Sisters

With Sister Fatima Elzein

Lunch time -
Tuesday and Thursday
12:45 P.M. - 1:05 P.M

Bellfield College
Library



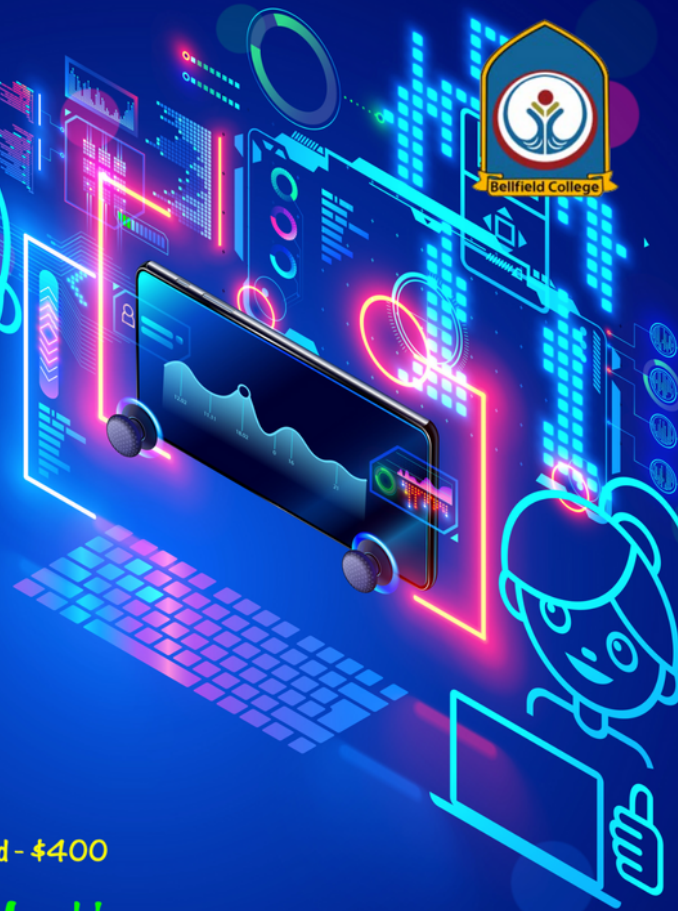


ASX SCHOOL'S SHAREMARKET GAME



Schools
Sharemarket
Game

TEST THE MARKET



You get \$50,000 virtual cash!

YOUR CHALLENGE... to create a winning share portfolio.

Compete with your classmates and get the chance to win cash prizes. **As per ASX major prize: 1st - \$600 2nd - \$500 3rd - \$400**

Game starts 16th March - Last day to register 8th March!

ali.fawaz@bellfield.nsw.edu.au

Contact Mr Fawaz via email if you would like to join!

Find out more about the Game www2.asx.com.au/smg

ASX Limited ABN 98 008 624 691

Learn to Invest!
Become financially literate!

Careers News 2023

UAC

APPLICATIONS OPEN FOR 2023 TO 2024 DOMESTIC UNDERGRADUATE ADMISSIONS

5 April

Applications open at 9am for:
Domestic undergraduate applications for admission
Schools Recommendation Scheme
Educational Access Scheme
Equity Scholarships

10 MOST POPULAR UNI COURSES IN 2023

Year 12 students from the class of 2022 are heading to university and we've compiled a list of the most in-demand courses. Medicine and Business are top of the list!

Here are the top 10 most popular courses among UAC applicants in 2023.

<https://uac.edu.au/media-centre/news/top-10-most-in-demand-courses-for-2023>

UPCOMING WESTERN SYDNEY WEBINARS

Various Dates in March and April

Join us online for one (or more!) of our upcoming Discover Western Webinars to find your perfect study fit and get the answers you need on how to apply. We'll take you through a selection of our courses grouped by areas of study, and what career paths these might lead to.

With uni applications opening soon, we'll also chat about Western's HSC True Reward early offer program and how to match your HSC subjects to see what early offers you could be eligible for. We'll also be exploring all of the other options and entry pathways to Western available to you.

Discover Western - Information Technology, Data Science & Mathematics:

Tuesday 28 February 2023 | 5pm

Discover Western - Engineering:

Wednesday 1 March 2023 | 5pm

Discover Western - Nursing & Midwifery:

Wednesday 8 March 2023 | 5pm

Discover Western - Law:

Tuesday 14 March 2023 | 5pm

Discover Western - Psychology:

Wednesday 15 March 2023 | 5pm

Discover Western - Business & Accounting:

Thursday 16 March 2023 | 5pm

Discover Western - Physiotherapy, Occupational Therapy, Speech Pathology, Podiatry, Paramedicine, Traditional Chinese Medicine:

Monday 20 March 2023 | 5pm

Discover Western - Science and Medical Science:

Tuesday 21 March 2023 | 5pm

Discover Western - Social Science & Social Work:

Wednesday 22 March 2023 | 5pm

Discover Western - Health Science, Sport Development, Health and Physical Education:

Monday 27 March 2023 | 5pm

Discover Western - Teaching & Education:

Tuesday 28 March 2023 | 5pm

Discover Western - Languages, International Studies, Tourism & Event Management:

Wednesday 29 March 2023 | 5pm

Discover Western - Architecture, Construction Management & Built Environment:

Tuesday 4 April 2023 | 5pm

Discover Western - Design:

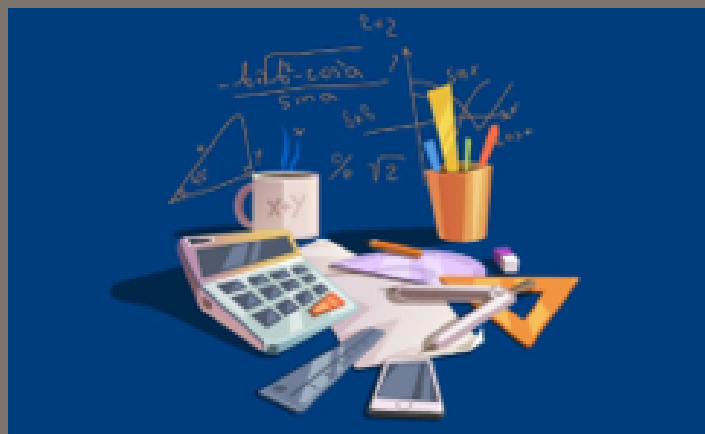
Wednesday 5 April 2023 | 5pm

Discover Western: Medicine:

Wednesday 26 April 2023 | 5pm

<https://www.westernsydney.edu.au/future/student-life/events/western-webinars>

focus on: Maths and Science



WORK EXPERIENCE AT THE POWERHOUSE MUSEUM AND SYDNEY OBSERVATORY

Autumn Holidays

Applications Open 1 March
Applications Close 21 March
11-13 April & 18-20 April

Winter Holidays

Applications Open 1 May
Applications Close 21 May
04 – 06 July & 11-13 July

Spring Holidays

Applications Open 1 August
Applications Close 21 August
26-28 Sept & 3-5 October

Our Secondary Student Placement Program provides a snapshot into the world of museums and cultural institutions. It gives high-school students a taste of an industry that they might one day be part of.

This program can be used as part of a secondary student's work experience requirement in Year 10, 11 and 12.

<https://www.maas.museum/about/student-positions/secondary-placements/>

5 MINUTES WITH A CLIMATE SCIENTIST

Passionate about the environment? Want to use your STEM skills to do good? We sat down with a climate scientist to find out how you can do just that. Climate scientist, Nandini Ramesh, uses cutting-edge maths and data techniques to inform her research. We asked her all about her STEM study and career path below.

<https://careerswithstem.com.au/climate-scientist-nandini-ramesh>

GIRLS DAY OUT IN STEM: DIGITAL COUNTRY FAIR QUEST

5 March - 12 March

Roll on up for the best International Women's Day event in town

We are so excited to bring to you this year a Girls Day Out in STEM (GDOS) Digital Country Fair Quest. What is a Digital Country Fair Quest you may ask: well, it's all the fun and excitement that you would expect at a traditional country fair but with a digital twist: Code your own line dancing, Ms. Country Scent – a Google lesson in AI/ML that matches your personality with a perfume, Best in Show which is face recognition of your furry or feathered friends, drones, AgTech, Ferris Prize Wheel, STEM show stalls, hot IT Book collections – just to name a few highlights. The event week ends with a wonderful night scene finale - enjoy some fireworks and a great playlist to celebrate your journey and achievements.

<https://www.eventbrite.com.au/e/girls-day-out-in-stem-digital-country-fair-quest-registration-526167098957>

INSPIRATED MARCH SUBJECT SEMINARS

11 & 12 March

Macquarie Uni and Online

Learn from the best of the best

Our teachers are acknowledged by their peers as the most passionate, qualified and experience in the HSC.

The key to the success of this program is tapping into their knowledge and insight into the marking process – thus removing uncertainty around the trials.

Seminars in HSC and Prelim English Advanced, HSC and Prelim English Standard, HSC and Prelim Maths Advanced, HSC and Prelim Maths Standard 2, HSC and Prelim Biology, HSC Physics, HSC and Prelim Business Studies, HSC Chemistry, HSC PDHPE and HSC Legal Studies

<https://secure.inspired.edu.au/hsc-live-march/>

**Come and see Mrs. Chebli in FF02
Thursday A Lunch and Monday B Lunch
to discuss your Career pathway.**

Naplan - Information for Parents

Dear Parents and Caregivers,

The following information below is an update on the requirements needed for your child to complete the mandatory NAPLAN tests in Weeks 7 and 8.

What you need to purchase:

- Sony ZX310 Sound Monitoring Over-Ear Headphones (Black) available at JB HI FI

OR

- Verbatim Multimedia Headset with Inline Mic Grey and Black available at Officeworks

****** *Students are required to purchase ONE of the above recommended headsets and hand them in to the College by FRIDAY 3rd March to the LIBRARY for collection ******

NO calculators are required for ANY of the tests.

Timeline for NAPLAN

- Practise Test - Week 5 (this is to ensure that all students are familiar with the platform/process and is NOT marked)
- NAPLAN TESTING - Week 7 and Week 8 - mandated test period.

Kind Regards,

Lela Vukovic
Deputy Head of Senior School



Due to a number of our student community with anaphylaxis to nut products, we ask that you refrain from sending these types of snacks to school with your children. Thank you for making Bellfield College a nut free zone.



Bellfield College Canteen Lunch Orders

The Bellfield College Canteen will be open until Friday 17th March 2023 for LUNCH ORDERS ONLY. **The Canteen is CLOSED during the recess break.** Please ensure you pack a healthy recess for your child.

- **Senior school students are not permitted to enter the junior school playground other than to collect their lunch order from the canteen at lunch time.**
- **Senior school students are not permitted to purchase canteen items for their junior school siblings.**
- Orders for lunch items, must be pre ordered and cannot be purchased over the counter during the lunch break.
- Please ensure your child brings their lunch order in a brown paper bag with their full name, year group and order clearly labelled. The correct money for the order must be included in the bag, **no change will be given.**
- Students must place their lunch order in the designated 'lunch order' box in the School administration office **by 8.30am**
- Failure to place their lunch order by 8.30am will result in your child not having their lunch order fulfilled.
- Lunch orders will be available for collection at the canteen during lunch 1, 12.30pm-12.50pm.
- Senior School students will collect their lunch order and return to senior campus immediately.

Students who do not adhere to these expectations will not be allowed to use this service.

Can I place a lunch order over the telephone?

Unfortunately, we do not accept lunch orders over the telephone. We thank all families in advance for compliance with this procedure.

Kind regards,

Amy Carrigg
Head of Business Operations



BELFIELD COLLEGE CANTEEN MENU

All items on the Canteen Menu must be **PRE ORDERED** and will be available at the start of lunch 1. Items are **NOT** available for purchase over the counter at Recess or Lunch.

Pies

Sausage roll	\$4.50
Spinach/Ricotta Roll	\$4.50
Vegetarian Pasty	\$4.50
Beef pie	\$4.50
Chicken Pie	\$4.50
Potato pie	\$4.50
Tomato Sauce	.50c
BBQ Sauce	.50c

Please write sauce choice on lunch order bag

Burger

Chicken Burger with Lettuce and Mayo	\$5.00
--------------------------------------	--------

Manoosh

Folded Cheese	\$4.00
Folded Oregano	\$4.00
Folded Meat	\$4.00
Vegetarian Pizza	\$6.00

Pasta/Rice

Lasagne	\$4.50
Twista Bolognese	\$4.50
Macaroni Cheese	\$4.50
Vegetarian Fried Rice	\$4.50

Drinks

Bottled water	\$2.00
Just Juice Popper - 200ML	\$2.00
Apple, Orange, Tropical and Apple/Blackcurrant	

Snacks

Grainwaves	\$1.50	Muffins - Choc Chip	\$2.00
Popcorn - BBQ	\$1.50	Hash Brown	\$2.00
Vege Crackers - Salt and Vinegar	\$1.50		
Vege Crackers - Italian Supreme	\$1.50		

Meal Deals

On the lunch order bag please indicate option number and select from your choice of food, choice of drink (juice or water) and choice of snack (Popcorn or Grainwaves or Vege crackers)

Option 1: Pie + drink + Popcorn/Grainwaves/Veg Crackers	\$7.00
Option 2: Hash Brown + drink + Popcorn/Grainwaves/Veg Crackers	\$5.00
Option 3: Pasta, + drink + Popcorn/Grainwaves/Veg Crackers	\$7.00
Option 4: Manoosh + drink + Popcorn/Grainwaves/Veg Crackers (Excluding folded vegetarian)	\$6.50

Please provide the correct money in the lunch order bag. No change will be given.



Uniform requirements

Girls Summer uniform

- White Bellfield College school blouse
- Long striped summer skirt
- Years 7-10 White slip on hijab/white undercap
Years 11-12 Teal headscarf/white undercap
- Bellfield College logo bag
- White school socks above the ankle or higher
- Black hard leather hard sole school shoes

Girls Winter uniform

- White Bellfield College school blouse
- Long teal check winter skirt
- Years 7-10 White slip on hijab/white undercap
Years 11-12 Teal headscarf/white undercap
- Bellfield College logo bag
- Teal blazer
- Teal wool blend knitted jumper
- Charcoal lycra stockings
- Black hard leather hard sole school shoes

NOTE: Girls without the correct headscarf will be issued with one from the School's supply and the amount of \$20.00 will be charged to the household account.



Girls Sports uniform

- Long sleeve polo shirt with logo (Saxe Blue, Biscay Blue and Ochre)
- Unisex Long Sport Pant. Stretch Polyester Microfibre (Saxe Blue, Biscay Blue and Ochre)
- White Sport socks above the ankle or higher
- School hat
- Sport Jacket. Unisex Stretch Polyester Microfibre (Saxe Blue, Biscay Blue and Ochre)
- Sport shoes (avoid bright colours)

NOTE: Students without the correct socks will be issued with a pair from the School's supply and the amount of \$5.00 will be charged to the household account.



Students not in the correct and full school uniform will be issued a lunch time detention.

NOTE ** Our College uniform shop stocks open toe tights suitable for ablution.

Not wearing leather school shoes is a WHS risk and students will not be allowed to participate in practical lessons including Food Technology, Technology Mandatory, and Science.

Boys Summer uniform

- White Bellfield College school shirt
- Charcoal wool blend long pleated pants
- Grey school socks above the ankle or higher
- Seniors - School tie
- Bellfield College logo bag
- Black hard leather hard sole school shoes
- Teal blazer (optional in Summer)

Boys Winter uniform

- White Bellfield College school shirt
- Charcoal wool blend long pleated pants
- Grey school socks above the ankle or higher
- Teal blazer
- Teal wool blend knitted jumper
- Bellfield College logo bag
- Black hard leather hard sole school shoes



Boys Sports uniform

- Long sleeve polo shirt with logo (Saxe Blue, Biscay Blue and Ochre)
- Unisex Long Sport Pant. Stretch Polyester Microfibre (Saxe Blue, Biscay Blue and Ochre)
- White Sport socks above the ankle or higher
- School hat
- Sport Jacket. Unisex Stretch Polyester Microfibre (Saxe Blue, Biscay Blue and Ochre)
- Sport shoes (avoid bright colours)

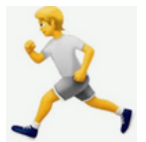


NOTE: Students without the correct socks will be issued with a pair from the School's supply and the amount of \$5.00 will be charged to the household account.



BELLFIELD COLLEGE SPORT

Sport Uniform Sports Uniform is worn for PE PRACTICALS and Sport days only. Please refer to the student timetable and CANVAS classroom for PE practicals days.

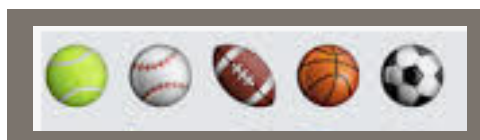


Sport Day is Thursday each week.

Uniform Supply Issues

We regret to inform you that the new sport uniform pants are out of stock with a considerable wait time for purchase (May 2023). In the meantime, we ask that students without the correct sport pants wear plain black track pants. These can be purchased from Kmart, Best & Less or Big W.

Students must have evidence of an order when asked by a teacher.



BOYS HAIRCUT

Students are required to wear their hair in a neat and tidy manner. Haircuts should be of an even grade. Hair should be well brushed and combed and it is assumed that hair will not be in such a condition as to invite comment.

Please be aware of the following:

- Extreme styles of hair are not permitted.
- Gel, mousse and hair spray or other similar substances should not be used.
- There will be no undercuts or steps.
- Nothing shorter than a number 4 comb is acceptable.
- Hair should not touch the shirt collar.
- Beards should be always well groomed / or clean shaven.
- Long sideburns are not permitted.
- Students will not attend class and parents will called to collect their child from school.
- Students who do not abide by the haircut requirements will be asked to fix the identified problem and not return to school until the issue is resolved.

Regular hair blitzs will enforce these expectations.



JEWELLERY REMINDER

The wearing of jewellery is NOT permitted.

This includes; rings, necklaces, bracelets, nose piercings and earrings.

No exceptions will be made.

Confiscated items will be returned to students at the end of the term.



Senior Campus Protocols

Suspension

An immediate suspension will be given to a student who: swears at a teacher, engages in physical fighting, violence directed toward a person, steals from someone or engages in immoral behaviour. Other behaviours may also result in suspension and may include vandalism, high level bullying, an ongoing accumulation of issues and an inability to demonstrate improved behaviour.



Students Late to Class

Students late to class will receive a Lunchtime Detention. Late to class can be defined simply as 'wrong place, wrong time'. If a student is late to class / truant an entire period they are marked as absent on the Sentral roll marking system. This is then followed up by the class teacher and the Head of Department the next day. Continued late to class / truancy may result in further action being taken.

Roll Call

Students must arrive prior to 8.30am and will attend period 1 class immediately after the morning bell (8.30am). Attendance rolls will be marked at the commencement of period 1 and throughout the day occurring at the beginning of each period. Students late to class will be issued with an 'on the spot' lunchtime detention.

Mobile phones



Our College is a student phone free zone.

Mobile phones **MUST** be placed in the school bag and switched off before entering school grounds. If seen, heard or used on school grounds devices will be confiscated immediately and held for two weeks. Please note that this also includes mobile phone devices such as AirPods and phone headsets. Other technology items including IPADS and Apple watches are also not permitted.

Students also have the option of handing in their mobile phone to the senior administration office each morning. Pick up occurs at 3.20pm, not earlier.

Lunchtime Detentions

Your child may receive an on-the-spot lunchtime detention for reasons including but not limited to:

- Late to class
- Out of Uniform
- Non completion of class work

If a student is absent from school when the detention is served, then he/she will have to serve it on another day and families will be notified accordingly.

Failure to attend the detention may result in a suspension as this is considered a serious breach of college rules.

Travel Policy

Please ensure that prior to booking any holidays during term time, that you seek approval from the college.

We only allow 10 school days leave maximum during a calendar year.

Any families who are in breach of our travel policy will have their enrolment terminated.

Year 11 and 12 students will not be granted leave during term time.



Homework

Homework is sent home every night. Please contact your child's class teacher if you have any questions.

The Main Types of Homework are:

- Practice Exercises – providing students with the opportunities to apply new knowledge, or review, revise and reinforce newly acquired skills
- Preparatory Homework – providing opportunities for students to gain background information on a unit of study so that they are better prepared for future lessons
- Extension & Research Assignments – encouraging students to pursue knowledge individually
- Revision and consolidation – reading over class notes, applying information and organisation or reformatting notes

Private Buses

Students travelling to and from school via private buses should use the footpath along the front driveway. When leaving school, students must use the Junior crossing and the student exit pedestrian gate.

Withdrawing from the College

If you are withdrawing a student from the College, please be advised that **10 weeks' notice is required**

If you do not provide the College 10 school weeks' notice of withdrawing from the college, a term's fees will be charged to your account.

Afternoon Pickup and Morning Drop off

Kiss and Drop

If travelling to and from school by car, pick up and drop off is strictly via the school car line zone. Car line may be accessed through the Junior school gate, follow the road through to the senior school library and wait in your car for your child. Children must wait in front of the library until mum or dad are seen to approach the library. Students are not permitted to wait along the grass area, nor should they be encouraged to cross carline to enter your vehicle.



- ALL students must be picked up from the car line.
- NO students will be permitted to exit to enter cars parked on the street.
- Gates will open at 2.45pm.
- Please join the car line. No cars will be permitted to make a right turn to enter the car line.
- ALL cars must exit the driveway and turn left ONLY. Right turn and U-turns will not be permitted.
- Students will be lined up in family groups during afternoon pick up to allow for faster access.
- Please be respectful and courteous to our staff as they are only doing their job.

Sick Bay

Illness at School

Students who are sick during the school day should:

1. See a teacher for written permission to go to the sick bay.
2. Present themselves promptly to the senior administration office.
3. Follow instructions from the administrative staff politely.
4. Stay at school until the administrative staff have contacted parents.



- Students must not telephone parents to arrange for their parent/guardian to collect them. This will be done by the office staff.
- The sick bay is used for a short time only and students will be monitored by the senior school administration officer. If the problem persists parents or caregivers will be contacted. For serious problems, parents or caregivers will be contacted immediately and for very serious cases medical help will be sought.
- It is extremely important that the medical information in each student's file is accurate.

If there is a change in your child's health status, the school MUST be notified. For students who are on medication parents are required to complete a 'Prescribed Medication' form explaining the nature of the medication and give clear guidelines for administering the medication. This form is available from the front office. Prescribed medications must be distributed from the office.



Senior School Contacts

Mrs Mouina Ramadan	Head of Senior School	mouina.ramadan@bellfield.nsw.edu.au
Mr Mohamed Wehby	Head of IHSAN	mohamed.wehby@bellfield.nsw.edu.au
Mrs Lela Vukovic	Deputy Head of Senior School	lela.vukovic@bellfield.nsw.edu.au
Mrs Belinda Fellows	Executive Assistant to the Head of Senior School	belinda.fellows@bellfield.nsw.edu.au
Mr Hussein Akil	Head of Department - PDHPE	hussein.akil@bellfield.nsw.edu.au
Mr Moustafa Nehme	PDHPE and HSIE	moustafa.nehme@bellfield.nsw.edu.au
Mrs Zahra Shaddad	PDHPE	zahra.shaddad@bellfield.nsw.edu.au
Mr Ibrahim Haydar	PDHPE and CAFS	ibrahim.haydar@bellfield.nsw.edu.au
Mr Wassim Hijazi	Head of Department - HSIE	wassim.hijazi@bellfield.nsw.edu.au
Mr Samuel Ashton	HSIE and PDHPE	samuel.ashton@bellfield.nsw.edu.au
Mr Ali Fawaz	HSIE and Legal Studies	ali.fawaz@bellfield.nsw.edu.au
Mrs Lela Vukovic	Modern History	lela.vukovic@bellfield.nsw.edu.au
Mrs Suzanne Rose	Head of Department English, Languages, Drama	suzanne.rose@bellfield.nsw.edu.au
Mrs Chanel Jbarah	English and HSIE	chanel.jbarah@bellfield.nsw.edu.au
Mr Mahdi Hussain	English and Drama	mahdi.hussain@bellfield.nsw.edu.au
Mrs Fatima Dirani	English and Learning support	fatima.dirani@bellfield.nsw.edu.au
Mrs Maysaa Balhas	Arabic Language	maysaa.balhas@bellfield.nsw.edu.au
Mrs Lela Vukovic	Head of Department - Creative Arts	lela.vukovic@bellfield.nsw.edu.au
Mr Andrew Smith	Music	andrew.smith@bellfield.nsw.edu.au
Mrs Sasha Hayes	Visual Arts and Visual Design	sasha.hayes@bellfield.nsw.edu.au
Dr Abdi Ali	Head of Department - Science & Technology	abdi.ali@bellfield.nsw.edu.au
Mr Javid Karimi	Mathematics Coordinator	javid.karimi@bellfield.nsw.edu.au
Miss Stephanie Laguna	Maths and Science	stephanie.laguna@bellfield.nsw.edu.au
Wayiz Ali	Maths, Science and D&T	wayiz.ali@bellfield.nsw.edu.au
Mrs Zahrah Imran	Maths and Science	zahrah.imran@bellfield.nsw.edu.au
Mrs Sarah El Hourani	Maths and Science	sara.elhourani@bellfield.nsw.edu.au
Mrs Shweta Sharma	Maths, Science and TAS	shweta.sharma@bellfield.nsw.edu.au
Mrs Rana Chebli	Arabic and HSIE	rana.chebli@bellfield.nsw.edu.au
Mr Muhsen Albayati	TAS and Food Technology	muhsen.albayati@bellfield.nsw.edu.au
Mrs Hayley Brown	Lab Assistant	hayley.brown@bellfield.nsw.edu.au
Batoul Charafeddine	Librarian	batoul.charafeddine@bellfield.nsw.edu.au
Year Advisors		
Mr Ali Fawaz	Year 7	
Mr Muhsen Albayati	Year 8	
Mr Moustafa Nehme	Year 9	
Mr Mahdi Hussain	Year 10	
Mr Ibrahim Haydar	Years 11 and 12	